

# Project Dilemma Solved!



I can't tell you how much I APPRECIATE all the great comments regarding the vintage mailbox dilemma. If you missed yesterday's post discussing the sad looking mailbox, click [here](#). If you are visiting via HomeTalk, [here is the post](#) about

the exterior light project that started the conversation about the mailbox re-do. As you can see below, freshly painted exterior light fixture makes existing mailbox stick out like a sore thumb.



I combined all of your wonderful thoughts and decided to do this to the mailbox. I spray painted the inside, sides and back the same color as the guest house light fixture~~an oil rubbed bronze, which is quite dark. Since there was some rust, the Rust-oleum paint will hopefully slow down any further deterioration.



In spraying the sides, I was careful not to get any of the overspray on the front or top.



After allowing these sections to dry, it was time for hand painting the front and top of the box. The metal isn't smooth, but not hammered either. In this next photo, you can see the difference between the painted and unpainted surfaces.



Using spray paint on the front isn't an option. Since the oil rubbed bronze spray paint is very dark in hue, I hand mixed the paint to use on the front. I combined Mars Black and Burnt Umber to create a warmer black. Sorry for the shadowy photos as I took these photos at night.



Hand painting the top of the mailbox allowed me to see how the new paint would look before I attempted the more visible face of the box.



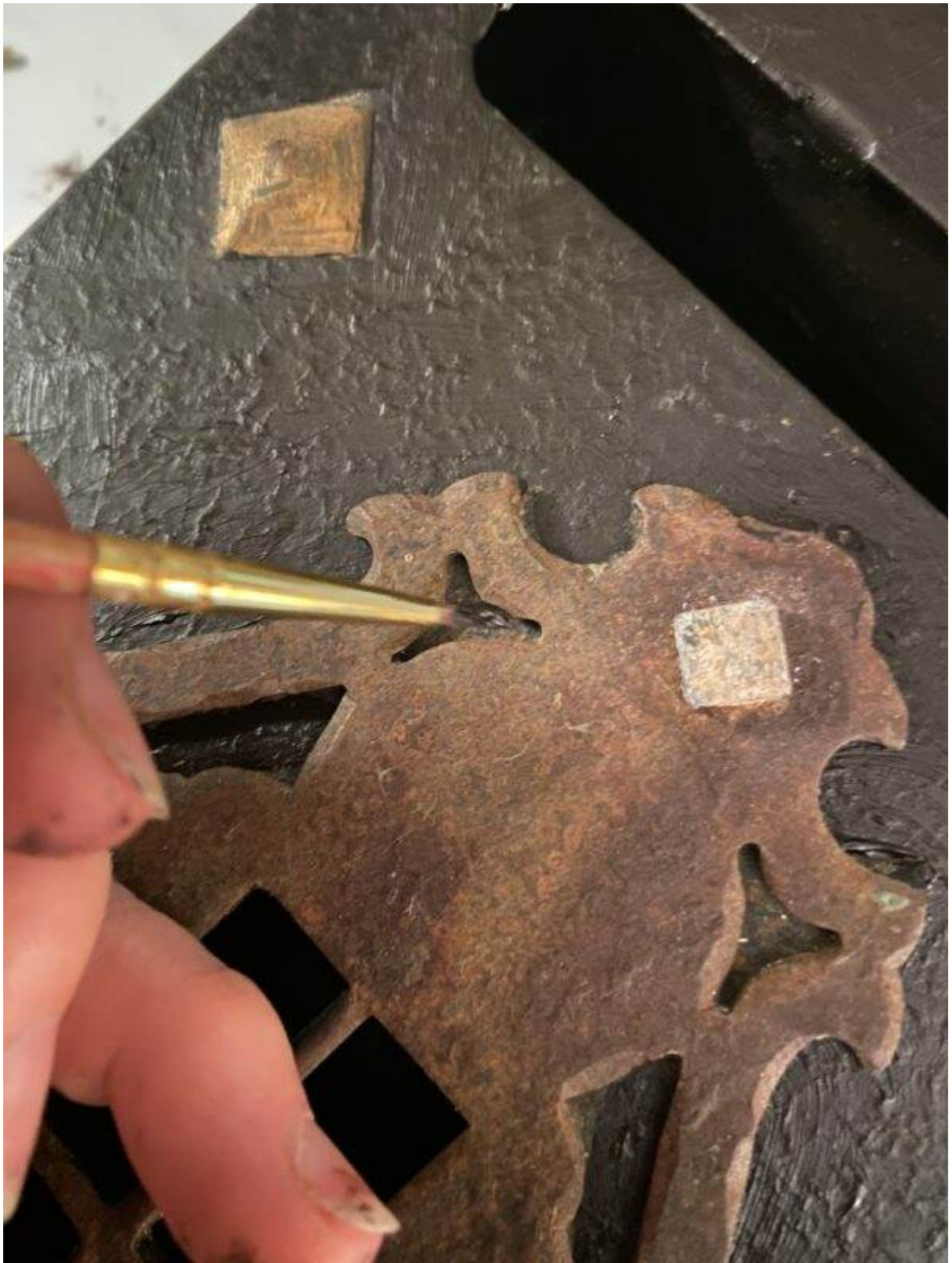
Here is the top prior to painting the diamonds.



At this point, I really like the fresh paint and so I take a deep breath and continue onto the front! Using 3 different size brushes, I make my way around the diamonds and the curlicue.









I decide to sand the curlicue because I want to remove that drip of old pale green paint which I failed to notice beforehand. I wait for the black paint to dry first. Thankfully, I am able to get most of the paint drip off.

With so many leftover craft items, I have two tubes of gold and bronze Rub 'n Buff metallic finish for the diamonds and

curlicue. Though the instructions say to rub it on, I elect to use a small paintbrush.



Yes, Rub 'n Buff can be used on metal. And it dries quickly! To see another project where I used this product, click [here](#).







At this point, I'm not sure if the Antique Gold is too bright but I paint all the diamonds. I take the time to touch up with the black/umber paint where I get sloppy.



The Spanish Copper Rub 'n Buff tube is a bit solidified and the contents will not easily come out. However, a bronzy liquid squirts out instead, and I use it anyway on top of the gold to tone it down.





I also paint this bronzy liquid on the curlicue to cover any scratches and dings. I paint the two rivets gold.



So here is the before....





The mailbox after....



Unfortunately the sun is shining directly on the front this morning, so the light in the after photos is not the same.

The light and mailbox before....



The light and mailbox after.....





The mailbox still has its vintage charm, but the new paint makes such a positive difference.

Thank you to Karen, Barbara (from [Mantel and Table](#)) Janie, Linda, Marty, Karin, and Louise for your helpful comments.

They truly gave me the inspiration to take the leap and paint this mailbox! I may have to spray it with a protective clear coat as I am not sure how my acrylic paints will hold up over time.



Marty, a subscriber, asked to see a bigger picture of the guest cottage. Again these were taken this morning with the eastern light exposure.



The hollyhocks have taken over the corner garden and the jacaranda tree is in full bloom.





It is such a beautiful morning here. The temperatures are in the low 70s and my morning walkabout was so joyful on this glorious Wednesday!

Enjoy your day! Please remember you can follow me on Instagram @lifeatbellaterra or [Facebook](#). To see more pictures of the guest cottage, click [here](#). Thank you for joining me today from

HomeTalk and if you like what you see, I would love for you to subscribe to Life at Bella Terra.

*Mary*

Products Used:

Rustoleum Oil Rubbed Bronze spray paint

Rub 'n Buff Wax Metallic Finish-Spanish Copper and Antique Gold

Golden acrylic paints-Mars Black and Burnt Umber